

Gillespie Corporation FOUNDED IN 1923

34 PINE STREET, P.O. BOX 359
TEL: 413/967-4980
WEBSITE: www.gillespiecorp.com

WARE, MA 01082-0359
FAX: 413/967-9534
E-MAIL: sales@gillespiecorp.com

MANLIFTS, SPECIAL PURPOSE PERSONNEL ELEVATORS AND ELECTRIC POWERED PLATFORMS

Standard and custom designed lifts in any capacity, material and size.

Applications: Wastewater Treatment Plants, Pump Stations, Wind Turbine Towers, Optical Fiber Production Towers, Tunnels, Maintenance, Silos, Tanks, Power Plants, Container Cranes and others.

We offer two basic models and can design the appropriate model for practically any situation or conditions. See a brief explanation and example of each below. Call or e-mail us for more examples or information:

ML-CT: Drum or Traction Powered Personnel Elevator. This is an elevator and complies with ANSI/ASME A17.1. It has a car and gates and functions as an elevator.

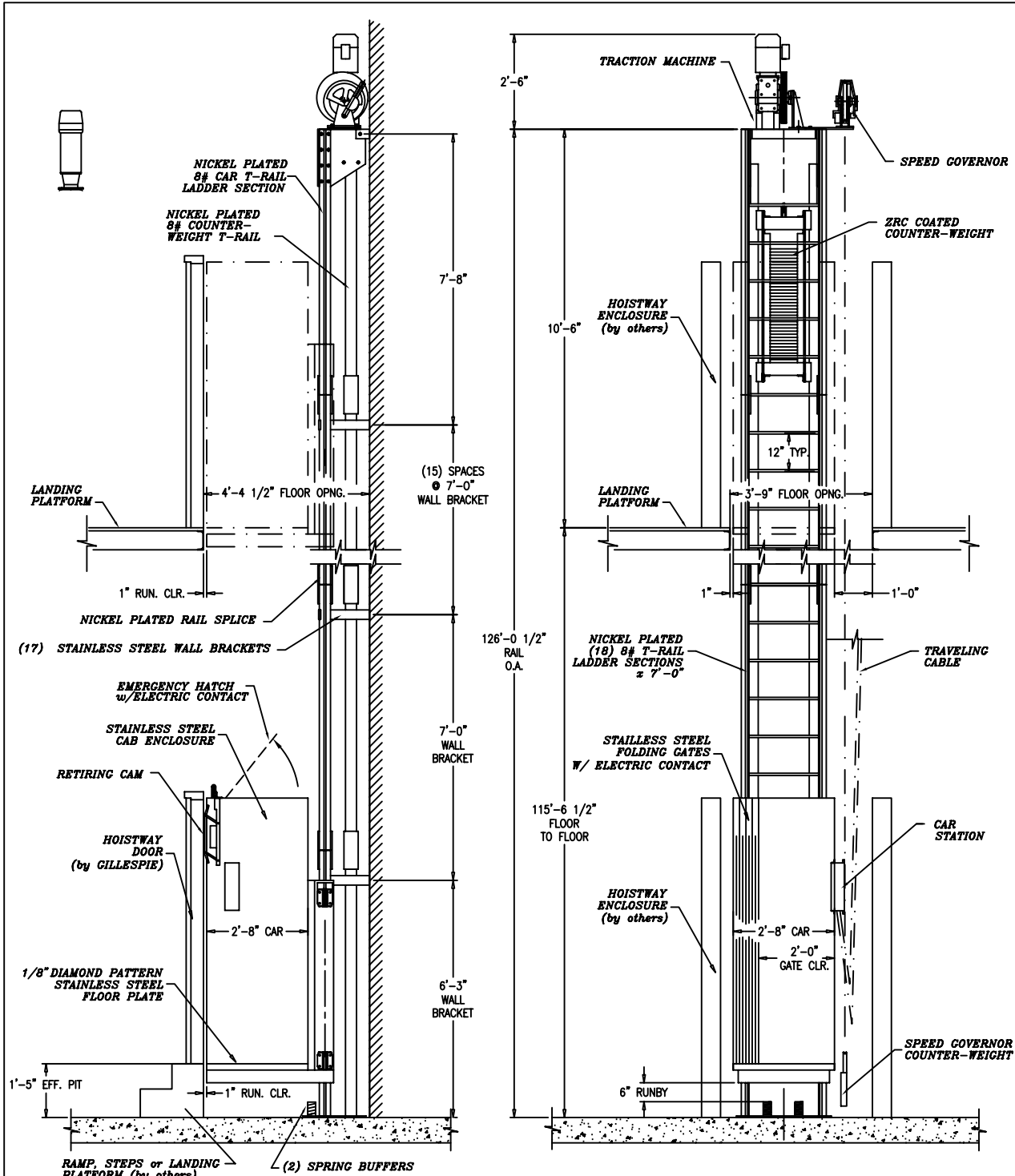
Use this model for:

- High rise applications
- High speed requirements

Features and options:

- Indoor or outdoor use
- Explosion proof
- Motor can be mounted at top or bottom
- Instantly actuated safety brakes
- Emergency ladder – in case of power outage

SEE THE ML-CT EXAMPLE BELOW. CALL OR E-MAIL US WITH YOUR SPECIFIC REQUIREMENTS OR QUESTIONS.



SECTION A

SECTION B

BY GILLESPIE

CONTROLLER: (NEMA 4 ENCLOSURE), CONSTANT PRESSURE. POTENTIAL SWITCH. MAGNETIC REVERSING SWITCH W/ (3) THERMAL OVERLOAD RELAYS. 110 VOLT CONTROL CIRCUIT TRANSFORMER.

CAR STATION: CONSTANT PRESSURE PUSH BUTTONS "UP"/"DOWN". EMERGENCY STOP. ALARM BUTTON. CAR LIGHTS. EMERGENCY HATCH W/ SWITCH ON TOP OF THE CAR. (2) INSTANTANEOUS WEDGE TYPE BROKEN ROPE SAFETIES (1) SS FOLDING GATE WITH ELECTRIC CONTACT. UPPER AND LOWER NORMAL LIMIT SWITCHES. UPPER AND LOWER FINAL LIMIT SWITCHES. STAINLESS STEEL 1/8" DIAMOND PATTERN FLOOR PLATE. 11 GA CAR BACK AND TOP & 16 GA CAR SIDES. HOISTWAY DOORS AND INTERLOCKS.

(2) PUSH BUTTONS HALL STATIONS "CALL", "IN USE" LIGHT, SURFACE MOUNTED AT EACH LEVEL. CAR COUNTER-WEIGHT. SPEED GOVERNOR WITH COUNTER-WEIGHT. (2) 3/8" 8x19 TRACTION WIRE ROPES (EACH 8200# ULTIMATE STRENGTH). NICKEL PLATED 8# T-RAIL LADDER SECTION. NICKEL PLATED 8# COUNTER WEIGHT RAILS. MULTI-WIRE ELECTRICAL CABLE.

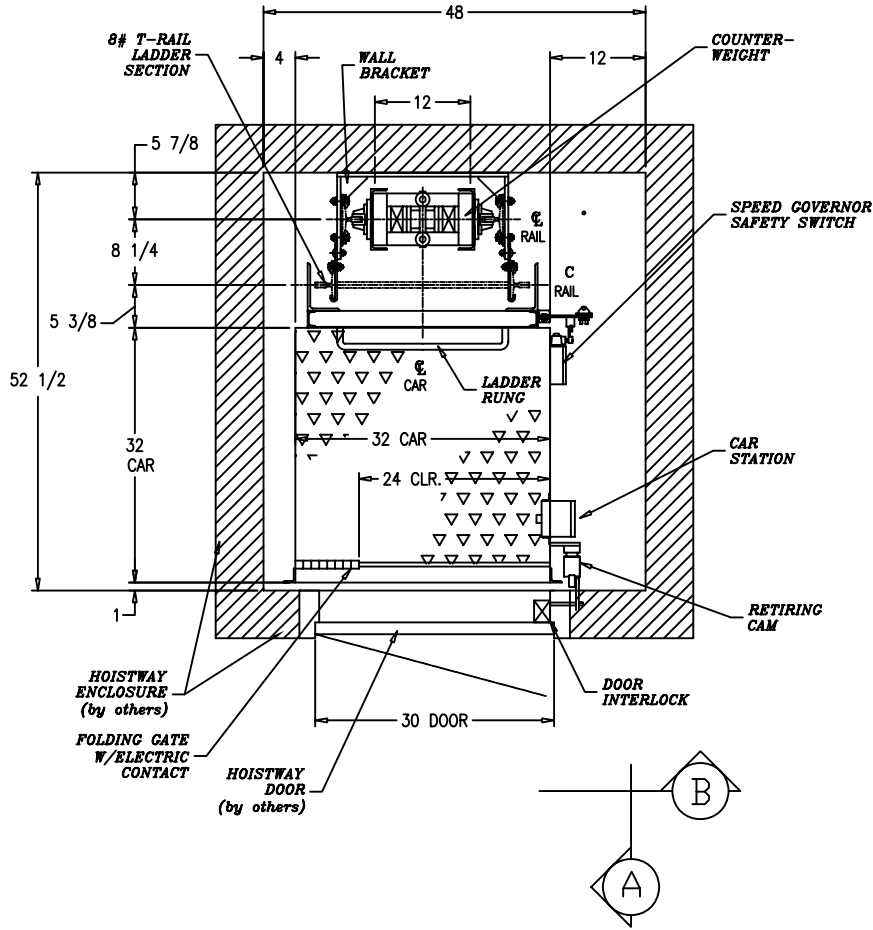
PAINTING
COUNTER-WEIGHT, CAR FRAME - ZRC ZINC COATING

BY OTHERS

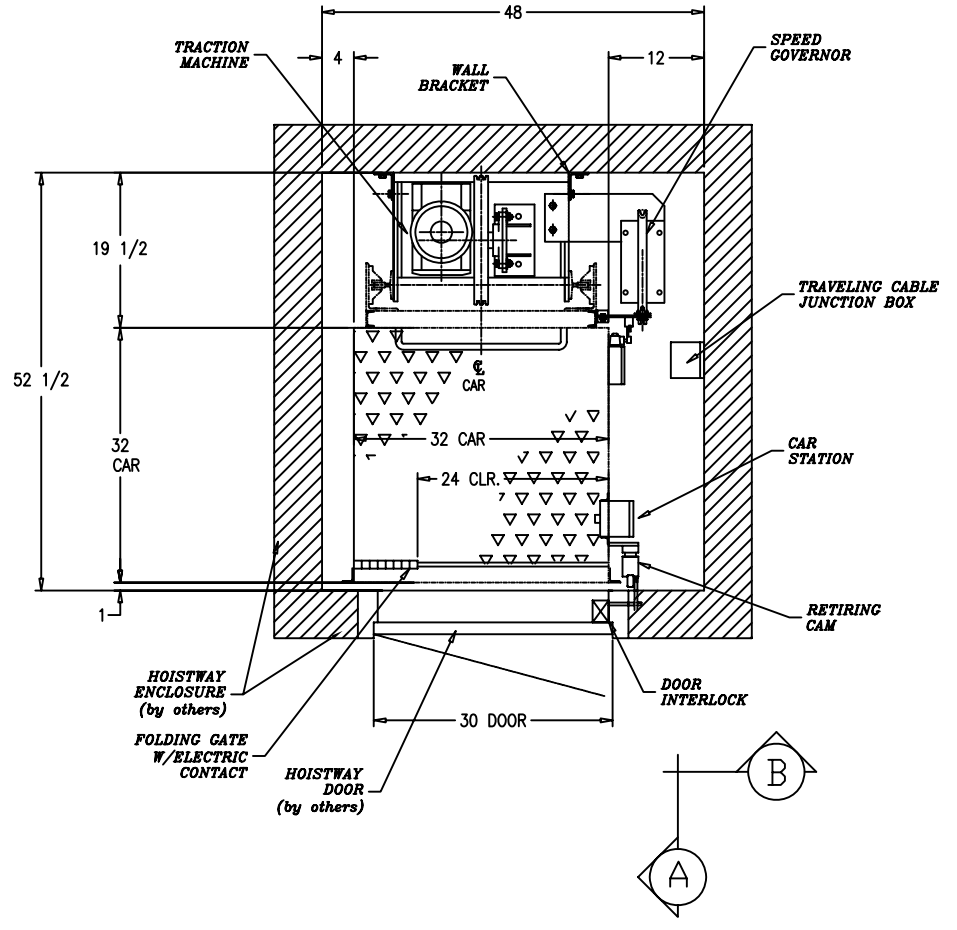
SHAFTWAY ENCLOSURE. SHAFTWAY WIRING AND CONDUIT. PROVIDE ELECTRIC POWER TERMINATED IN FUSED DISCONNECT SWITCH.

NOTE:
- ALL ELECTRICAL DEVICES EXPLOSION PROOF IF REQUIRED.
- GILLESPIE CORPORATION WILL SUPPLY ALL LANDING EQUIPMENT NECESSARY FOR THE REQUIRED NUMBER OF STOPS.

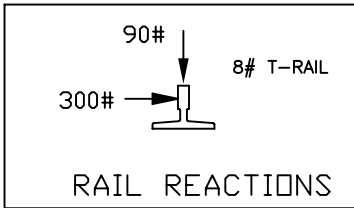
MODEL ML-CT SERVICE LIFT			
DUTY(lbs)	500	SPEED(fpm)	50
MOTOR:	squirrel cage high torque		
H.P.	1.5	RPM:	1700
VOLTAGE:	480	PHASE:	3
CYCLE:	60	CURRENT:	AC
REDUCER:	HELICAL WORM		
BRAKE:	SOLENOID		
GILLESPIE CORPORATION			
WARE, MASSACHUSETTS			
BUILDING: EXAMPLE ONLY-CALL FOR INFO			
LOCATION:			
ARCHITECT:			
REPRESENTATIVE:			
ENGINEERING:			
CONTRACTOR:			
ENGINEER YM	DATE	CHECK	
SO NO	8494	SHEET	1 OF 2



PLAN VIEW
LOWER LEVEL



PLAN VIEW
UPPER LEVEL



GILLESPIE CORPORATION	
WARE, MASSACHUSETTS	
BUILDING:	
LOCATION:	
ARCHITECT:	
REPRESENTATIVE:	
ENGINEERING:	
CONTRACTOR:	
ENGINEER YM	DATE
SO NO 8494	CHECK
	SHEET 2 OF 2

ML-1: Electric Powered Platform. Complies with ANSI A120.1.

Use this model for:

- Open shafts – allowing work at intermediate levels
- Mid to Low-rise applications

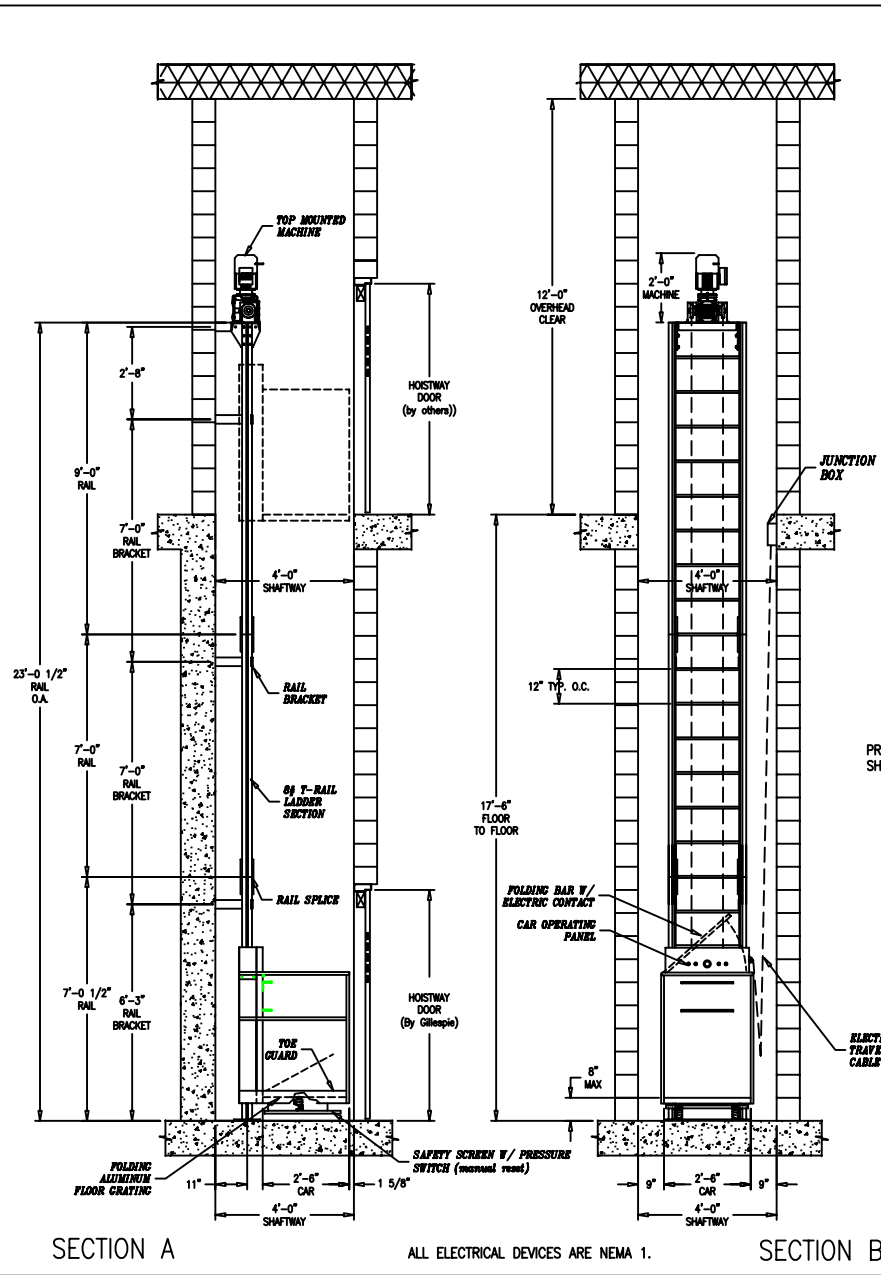
Features and Options:

- Indoor or outdoor use
- Explosion proof
- Motor can be mounted at top or bottom
- Instantly actuated safety brakes
- Emergency ladder – in case of power outage

SEE THE ML-1 EXAMPLE BELOW. CALL OR E-MAIL US WITH YOUR SPECIFIC REQUIREMENTS OR QUESTIONS.

GILLESPIE CORPORATION
34 Pine Street; PO Box 359
Ware, MA 01082

Tel: (413) 967-4980 Fax: (413) 967-9534
E-mail: sales@gillespiecorp.com
Website: www.gillespiecorp.com



BY GILLESPIE

CONTROLLER: NEMA 1 ENCLOSURE, CONSTANT PRESSURE.
 POTENTIAL SWITCH.
 MAGNETIC REVERSING SWITCH W/ (3) THERMAL OVERLOAD RELAYS.
 110 VOLT CONTROL CIRCUIT TRANSFORMER.

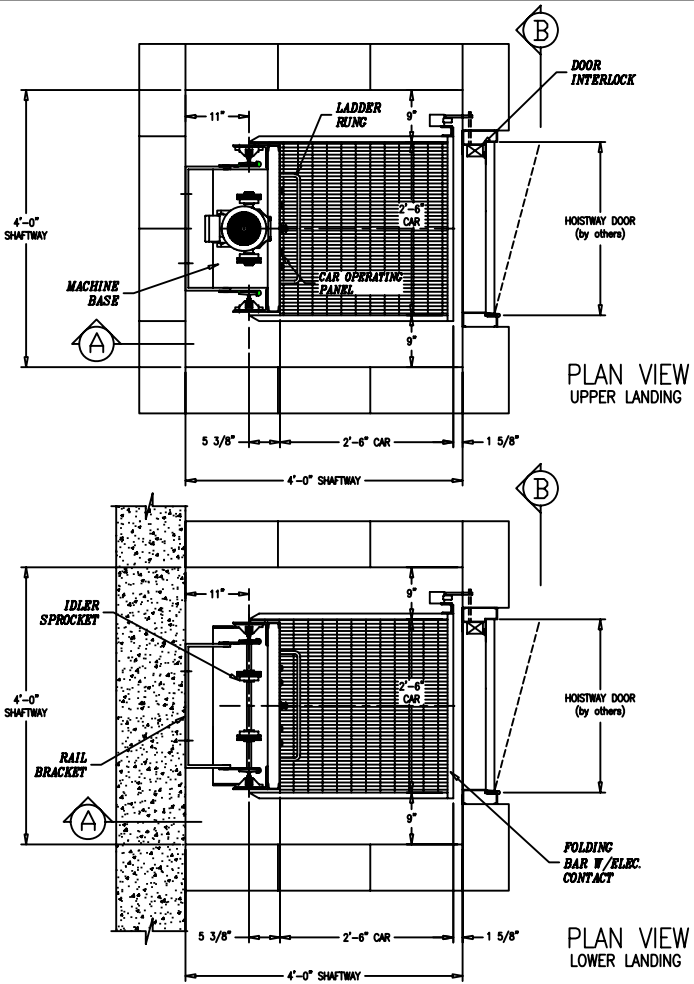
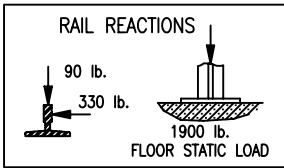
CAR STATION: CONSTANT PRESSURE PUSH BUTTONS STATION, TWO HANDS REQUIRED TO OPERATE.
 MUSHROOM EMERGENCY STOP (manual reset).
 FOLDING SAFETY BAR WITH ELECTRIC CONTACT.
 HINGED ALUMINUM FLOOR GRATING W/ PRESSURE OPERATED (manual reset) SAFETY SCREEN BELOW.
 EMERGENCY HATCH W/ SWITCH ON THE CAR FLOOR.
 SLACK OR BROKEN CHAIN SAFETY SWITCH.
 (2) INSTANTANEOUS WEDGE TYPE BROKEN OR SLACK CHAIN SAFETIES.
 UPPER & LOWER NORMAL LIMIT SWITCHES.
 UPPER & LOWER FINAL LIMIT SWITCHES.
 11 GA CAR BACK.
 (2) CONSTANT PRESSURE "UP"/"DOWN" SURFACE MOUNTED HALL STATIONS, ONE AT EACH LEVEL.
 (2) SPRING LOADED CHAINS (average ultimate strength 8,500 each)
 (2) DOUBLE CHAIN IDLER SPROCKETS W/ GUARDS.
 CHAIN GUARDS ON ALL SPROCKETS.
 8# T-RAIL LADDER SECTIONS.
 MULTI-WIRE TRAVELING CABLE TO CAR.
 HOISTWAY DOORS WITH (2) ELECTRO-MECHANICAL DOOR INTERLOCKS.

BY OTHERS

PROVIDE ELECTRIC POWER TERMINATED IN FUSED DISCONNECT SWITCH.
 SHAFTWAY WIRING & CONDUIT.

PAINTING

ONE SHOP COAT BLACK PRIMER.



GILLESPIE CORPORATION
 WARE, MASSACHUSETTS

MODEL ML-1 MAINTENANCE LIFT		BUILDING:
		LOCATION:
DUTY(lbs) 500	SPEED(fpm) 25	ARCHITECT:
MOTOR: squirrel cage high torque		CONTRACTOR:
H.P. 1.5		ENGINEER YM
VOLTAGE: 208/3/60		CHECK
REDUCER: HELICAL WORM		DATE
BRAKE: SOLENOID		FILE NAME 8747-R1.dwg
		SO NO 8747
		SHEET 1 OF 1