

Gillespie Corporation FOUNDED IN 1923

TIME AND LABOR SAVINGS

SIDEWALK ELEVATOR with *SAFETY SCREENS* – ANSI/ASME A17.1 Code

Safety Screens allow one operator to ride in both directions versus typical two-person operation.

Code requires **operation of all sidewalk elevators from grade only** since a rider-operator is unable to determine whether a person or other obstacle is on the closed sidewalk door. Two people, an operator and a loader, are normally required – or one person to load and then go up to grade for operation.

Code Requirements:

- Hinged safety screens located beneath and parallel to the sidewalk door.
- Scissor or folding car gates.
- Push button stations on car and in the basement.

Operation is as follows:

- Car is called to grade by operator standing at sidewalk door level.
- Operator then secures the sidewalk doors in open position by using the furnished locking bar.
- Operator can now enter car and operate with push button station (also at basement level) as a full freight elevator, with screens closing for safety as car descends. Riding up operator has full vision through the screens.
- When operator is done unloading, returns to the sidewalk level and removes locking bar which allows the sidewalk doors to close as the car is being lowered to basement level.

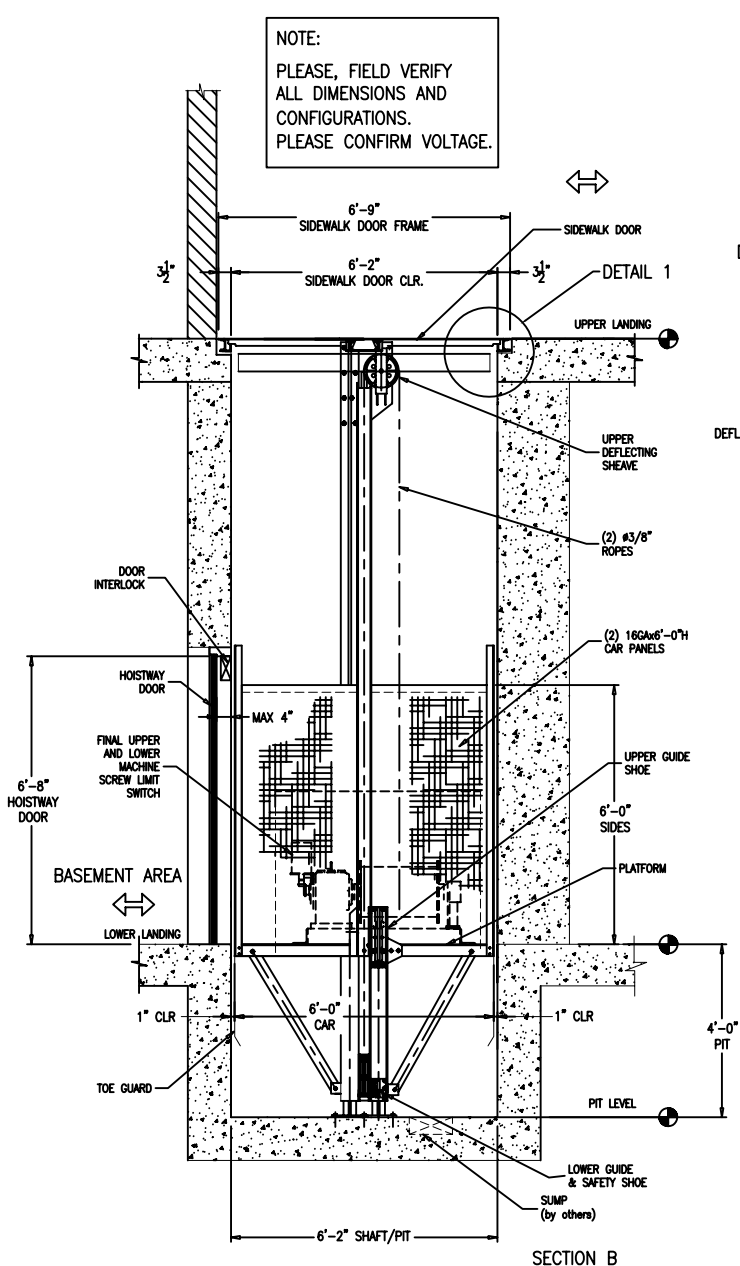
OPTIONS:

1. Maximum security automatic locking device on sidewalk door.
2. Folding car gates with 90° swing feature (allows full car width clearance).
3. Roto-Phase generates 3 phase from single phase source.
4. Sidewalk doors – in steel, aluminum or stainless steel.
5. Elevator/lift can be designed to rise above grade to the height of a truck bed, operating like a dock lift for easy loading/unloading.
6. Extra heavy-duty “truckable” sidewalk doors.
7. Single or double swing U.L. labeled door and frame assembly for basement.
8. Design to suit existing hoistway or renovation.
9. Three or more stops. Can operate like a freight elevator below grade or a loading dock above grade at “trucking” height.
10. Remote machine room.
11. Helipad gurney roof-top passenger elevators, and holeless hydraulic units.

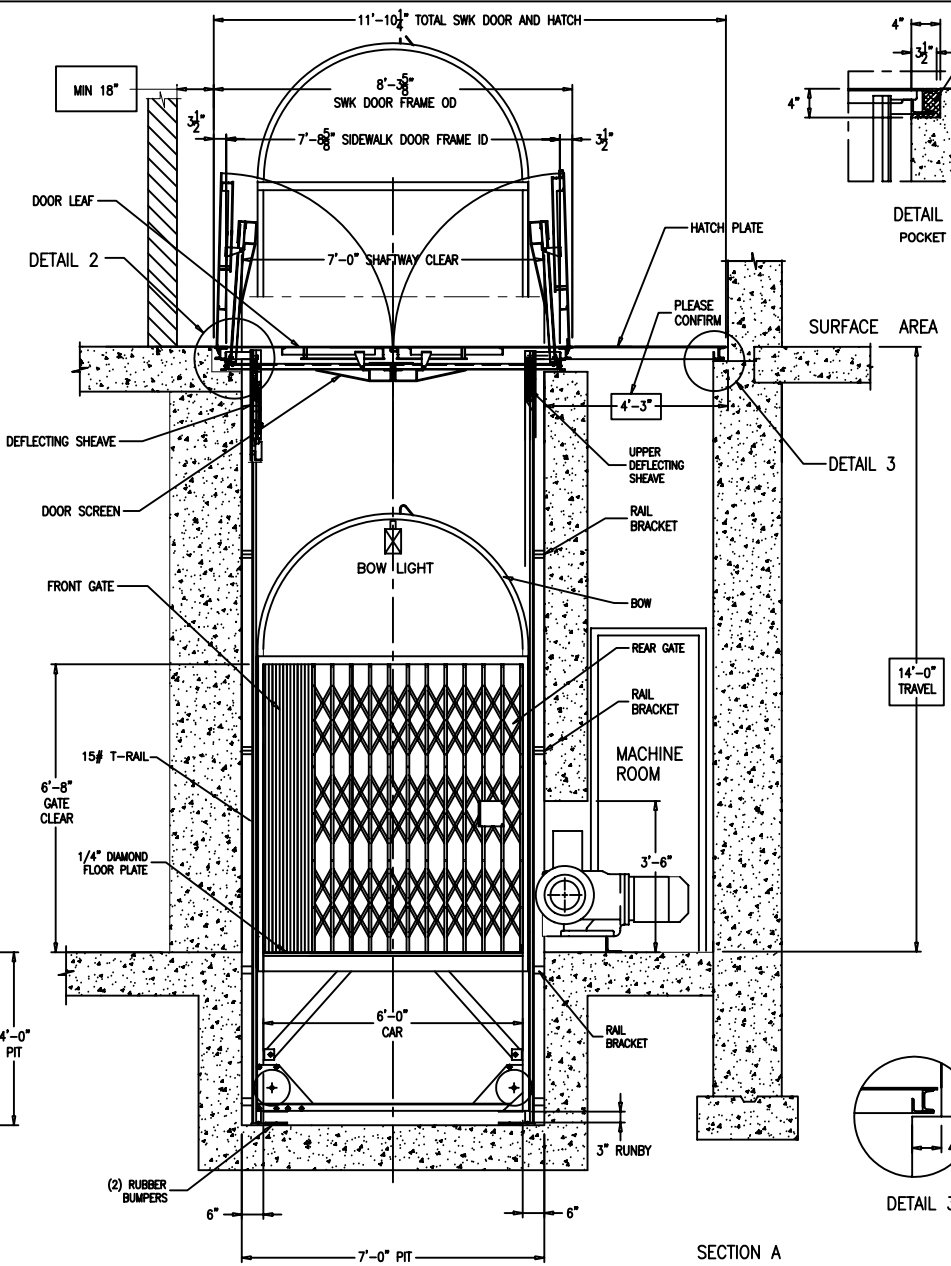
NOTE: We offer free consulting to assist in problem solving and Code compliance.

GILLESPIE CORPORATION
PO Box 359; 34 Pine Street; Ware, MA 01082
Tel: (413) 967-4980 Fax: (413) 967-9534
E-mail: sales@gillespiecorp.com
Website: www.gillespiecorp.com

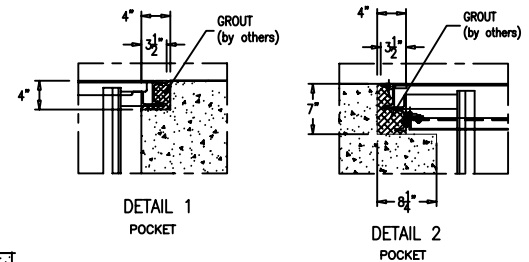
NOTE:
PLEASE, FIELD VERIFY
ALL DIMENSIONS AND
CONFIGURATIONS.
PLEASE CONFIRM VOLTAGE.



SECTION B



SECTION A

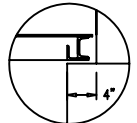


DETAIL 1
POCKET

DETAIL 2
POCKET

SURFACE AREA

DETAIL 3



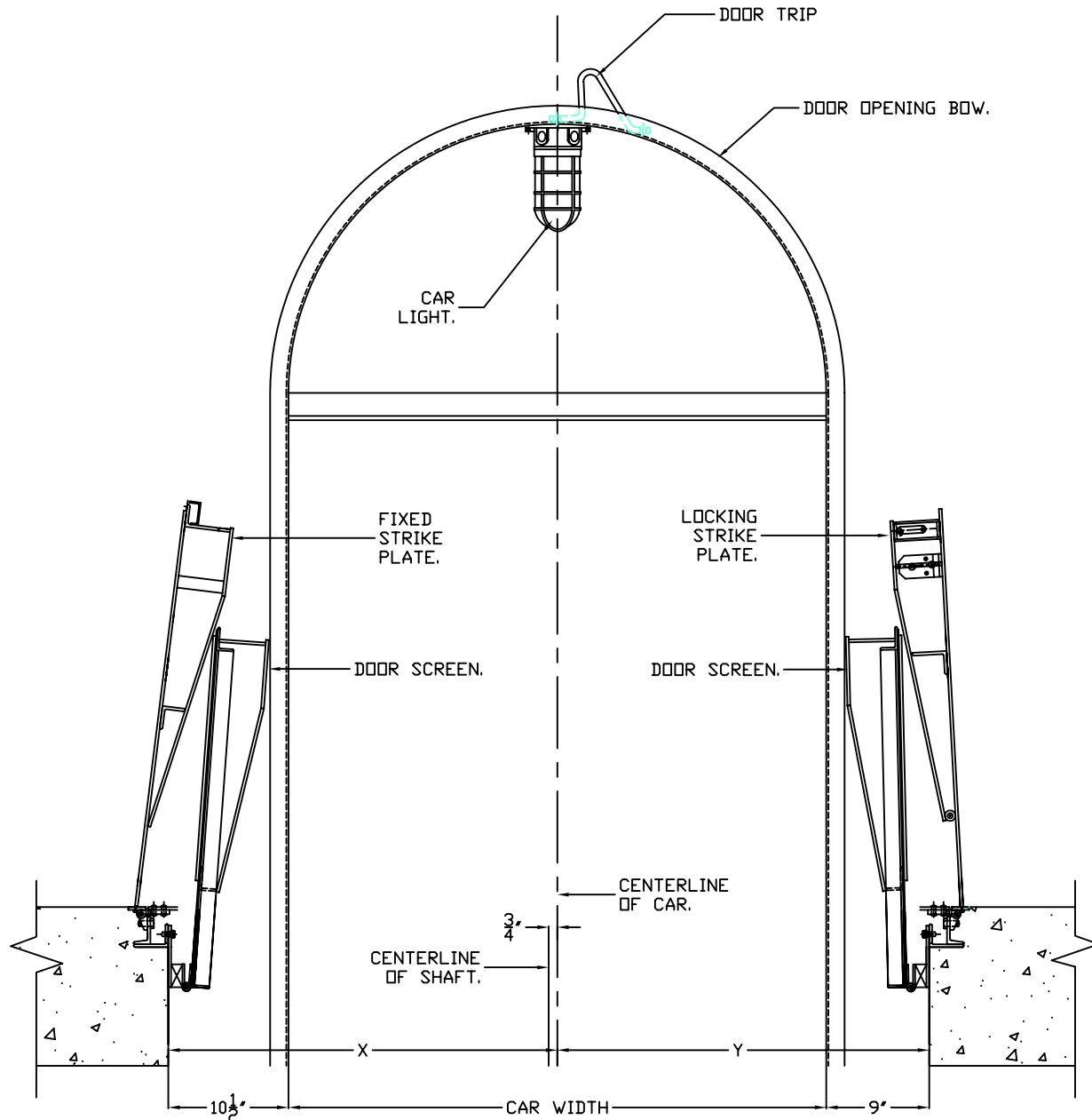
DETAIL 3

BY GILCO

CONTROLLER:
CONSTANT PRESSURE, NEMA 1 ENCLOSURE,
WITH POTENTIAL SWITCH,
MAGNETIC REVERSING SWITCH,
(3) THERMAL OVERLOAD RELAYS,
REVERSE PHASE RELAY AND
110 VOLT CONTROL CIRCUIT TRANSFORMER.

(1) WEATHER TIGHT KEY OPERATED CONSTANT
PRESSURE SURFACE MOUNTED CONTROL STATION
(UP, DOWN, IN USE LIGHT) AT UPPER LEVEL
(1) PUSH BUTTON CAR STATION "UP & DOWN"
WITH EMERGENCY STOP AND ALARM.
UPPER & LOWER LIMIT SWITCHES.
FINAL UPPER & LOWER MACHINE SCREW LIMIT SWITCH.
DRUM SLACK CABLE SWITCH.
(2) COLLAPSING GATES WITH ELECTRIC SWITCH.
INSTANTANEOUS WEDGE TYPE BROKEN ROPE SAFETY.
10" DIA. SHEAVES WITH OILITE
IMPREGNATED BRONZE BEARINGS.
DOUBLE GROOVED STEEL DRUM.
(2) 3/8" WIRE ROPE PREFORMED PLOW STEEL CABLES.
15# T-RAILS & HARDWARE.
(2) RUBBER BUMPERS.
VIBRATION ISOLATION PADS UNDER
MACHINE AT ANCHOR POINTS.
(2) 16 GA PANELS x 6'-0" HIGH.
STEEL FRAME WITH 1/4" DIAMOND FLOOR PLATE.
(1) DOUBLE #3/8" ROPE EQUALIZER.

MODEL PS1E-1	
SIDEWALK ELEVATOR - 2 STOPS OPPOSITE	
DUTY(lbs)	2000
SPEED(fpm)	20
MOTOR	SQUIRREL CAGE HIGH TORQUE
H.P.	5.0
VOLTAGE	480/3/60
REDUCER	HELICAL BEVEL
BRAKE	SOLENOID
GILLESPIE CORPORATION	
WARE, MASSACHUSETTS	
JOB:	
LOCATION:	
ARCHITECT:	
LOCATION:	
CONTRACTOR:	SCHINDLER ELEVATOR CORP.
LOCATION:	
FILENAME:	8964-2.dwg
ENGINEER:	MF DATE: CHK:
SO:	8964 SHEET 1 OF 2



GILLESPIE CORP.			
TEL: 413/967-4980 WARE, MASS.			
SCALE	DR. BY PAM	CK. BY	APPV.
DATE	REV.	REV.	REV.
BOW, DOOR & SCREEN LAYOUT			
www.gillespiecorp.com			