



GILLESPIE
corporation SINCE 1923
Elevators ■ Material Lifts ■ Cranes

34 Pine Street, P.O.Box 359, Ware, MA 01082
TEL 413.967.4980 FAX 413.967.9534
www.gillespiecorp.com



SPECIAL APPLICATION ELEVATOR Preserves Dance Floor Footprint

*Bridal Elevator Incorporates Composite of Technology at VILLA BARONE MANOR
The Bronx, New York*



DESIGNING A BRIDAL ELEVATOR WITH FLAIR

With its spacious dance floor, elegant dishes and exotic decor, Villa Barone Manor's main ballroom has always been a popular spot for wedding receptions. In the early 2000s, however, the owners decided to create a truly unique venue by installing a large, glass-enclosed elevator that would transport newlyweds from a lower-level bridal waiting room up into the center of the dance floor.

THE CHALLENGE: Engineering a System for a Retractable Space

A crucial stipulation was that the bridal elevator could not reduce the existing dance floor area. The unit had to be seamlessly designed into the ballroom such that its presence was completely inconspicuous when situated a floor below. Furthermore, to ensure that newly married couples are easily seen by all guests, it was decided that the elevator would contain a revolving turntable and rise to a resting point higher than the dance floor.

THE SOLUTION: Combination Passenger-, Freight- and Sidewalk-Elevator Technologies

Based on a co-design with GEM Elevator, Gillespie leveraged technology from passenger, freight and sidewalk elevators. Gillespie's engineers finalized and executed their plan. The resulting elevator incorporates a 10' x 10' glass-enclosed cab, a floor-mounted 9'-diameter turntable and a vertical lift door in the dance floor that becomes the cab roof as the cab rises.

CHAIN
HOIST

RAIL
BRACKET

6'-4"
SHAFTWAY
CLEAR

6'-0"
CLEAR

Pg. 1



SPECIAL APPLICATION ELEVATOR Preserves Dance Floor Footprint *(continued)*

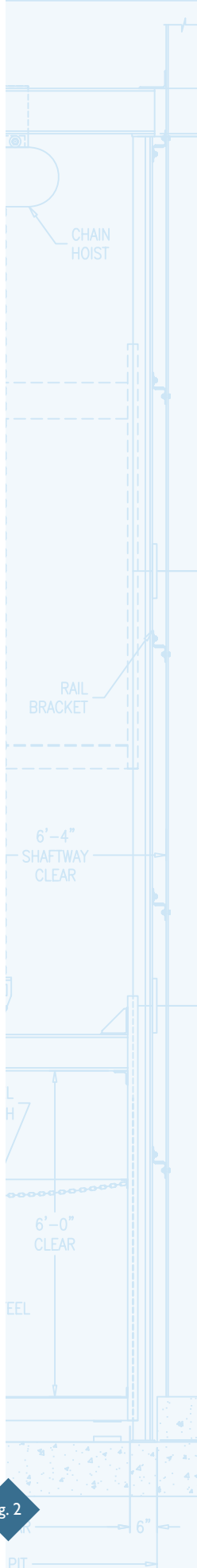
A legal hoistway, motor room and pit were provided. Creating a deeper pit than originally envisioned allows the elevator car to travel 36" above the dance floor. Barricades consisting of Lucite panels supported by posts were installed around the perimeter of the vertical lift door prior to car movement. Each post was electrically connected in a series, so that the car can not move if any posts are missing. Once the elevator returns to the lower level, thereby causing the vertical lift door to reseal itself in the dance floor, the posts and panels are removed and the post holes capped.

Instead of being located inside the car, safety controls including emergency stop, constant-pressure up-and-down buttons, and turntable controls were installed at a nearby control station. Furthermore, hoistway and cab doors were interlocked.

From its completion in 2003 to the present day, the bridal elevator provides the grandest of entrances for just-married couples.

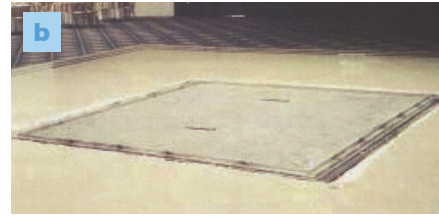
AWARDS

Elevator World 2004 Project of the Year *(1st Place)*
(Category: Special Application Elevators)





SPECIAL APPLICATION ELEVATOR Preserves Dance Floor Footprint (continued)



a Happy couple in elevator car on rotating turntable. **b** Top of the elevator car below surface, flush with the dance floor **c** Bridal lift during installation. **d** Happy couple in elevator car on rotating turntable.

