

Gillespie Corporation FOUNDED IN 1923

34 PINE STREET, P.O. BOX 359
TEL: 413/967-4980
WEBSITE: www.gillespiecorp.com

WARE, MA 01082-0359
FAX: 413/967-9534
E-MAIL: sales@gillespiecorp.com

COLLAPSING PASSENGER / FREIGHT CAR GATES

For passenger, freight or material lifts, we fabricate each gate individually to your specifications. Construction and materials are of the highest quality, surpassing ANSI/ASME codes. You may select from a number of finishes and colors to make sure your customer has the look they want.

Please see below, call, or e-mail us for more information or visit our website.



GILLESPIE CORPORATION **COLLAPSIBLE SCISSOR GATES**

To provide a quotation we need the following information
(Please see the information below as a reference):

- 1) Is this a freight or passenger gate?
- 2) Box track or flat track on top?
- 3) Track length (total opening width)?
- 4) Hand of the gate-from in the car. Looking at the gate from INSIDE the car, does the gate slide to the right or left when opening?
- 5) Clear height under the track?
- 6) Does car have a canopy?
- 7) Stainless or primed gate?
- 8) Do you want the swing feature to provide a greater opening?

Please note: Our gates are guided at the bottom. A track will have to be provided by others on the platform to guide the gate. A groove or 1/2" by 1/2" minimum is required.

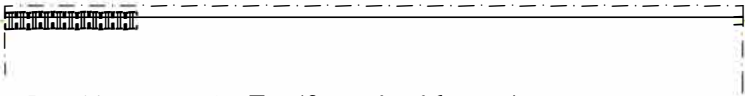
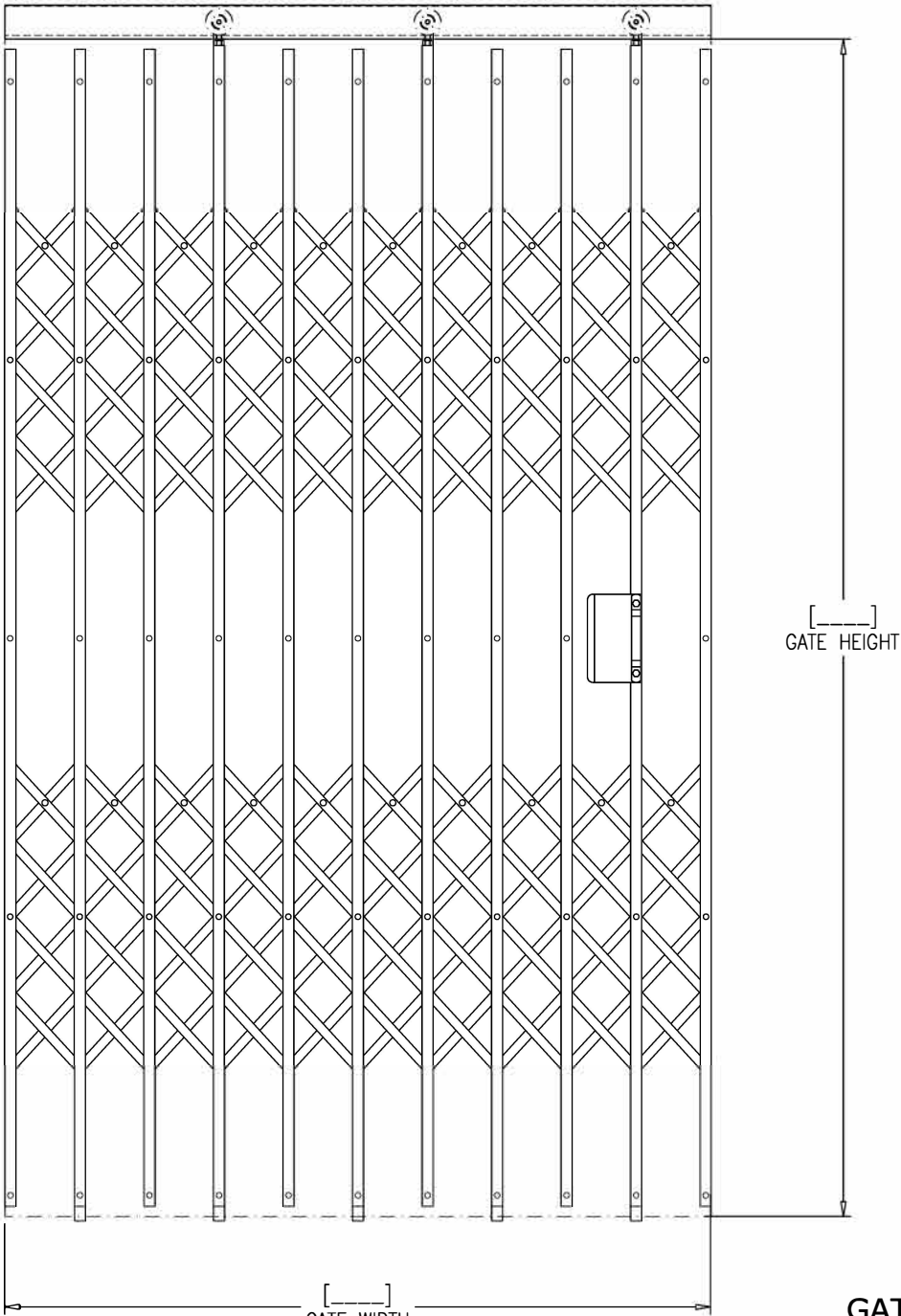
Please contact us if you have questions.

GILLESPIE CORPORATION
P.O. BOX 359
34 PINE STREET
WARE, MA 01082
TEL: 413-967-4980
FAX: 413-967-9534

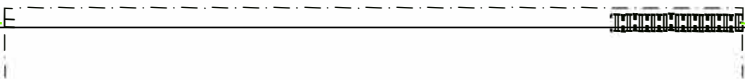
E-MAIL: GaryWest@GillespieCorp.com
WEBSITE: <http://www.GillespieCorp.com>

HORIZONTAL COLLAPSING FREIGHT ELEVATOR GATE

TYPICAL 4'-0" x 6'-8" RIGHT HAND FREIGHT GATE SHOWN

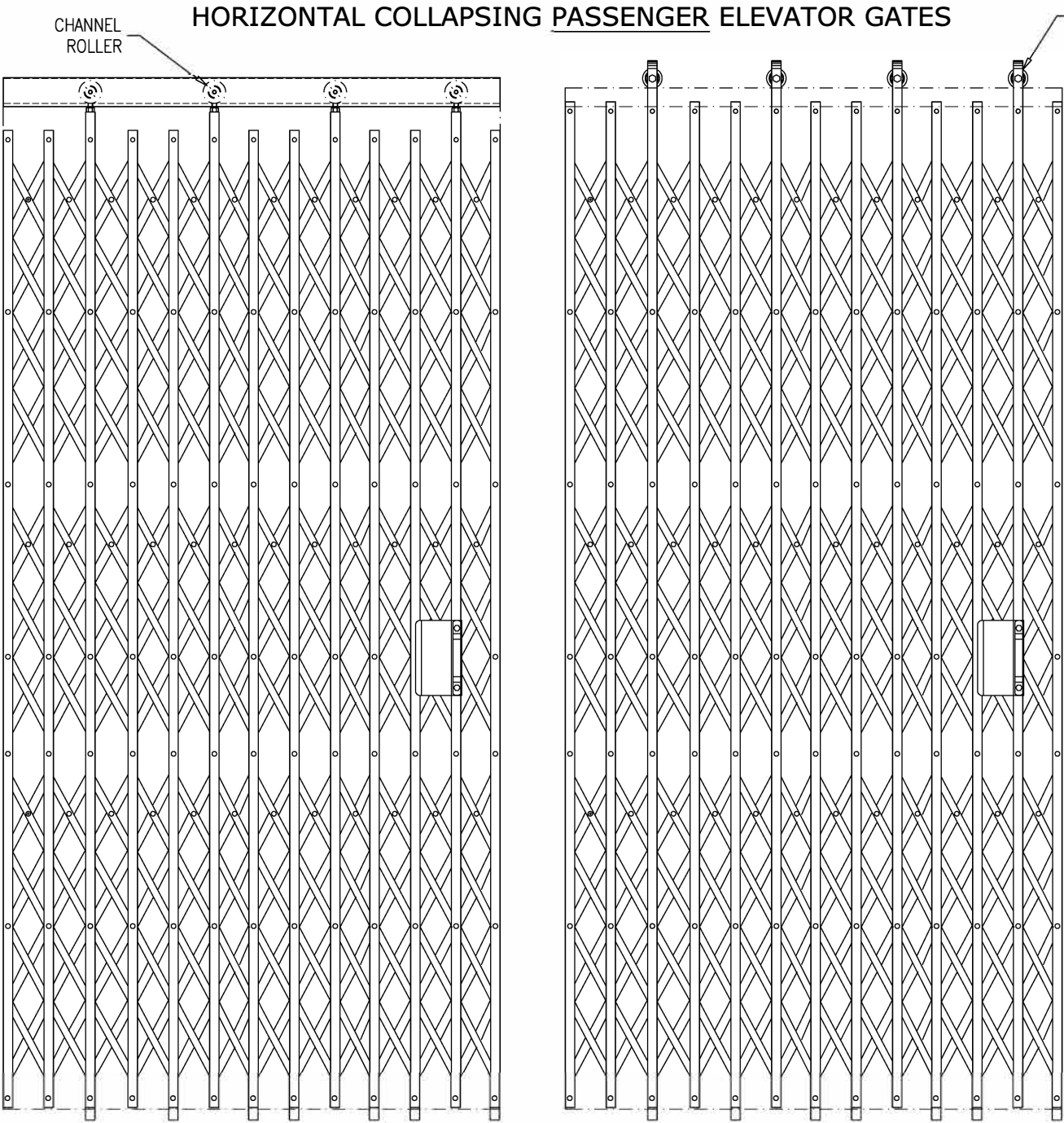


LEFT HAND GATE (from inside car)



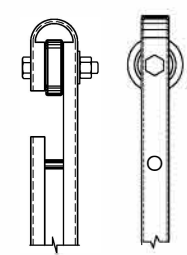
RIGHT HAND GATE (from inside car)

HORIZONTAL COLLAPSING PASSENGER ELEVATOR GATES

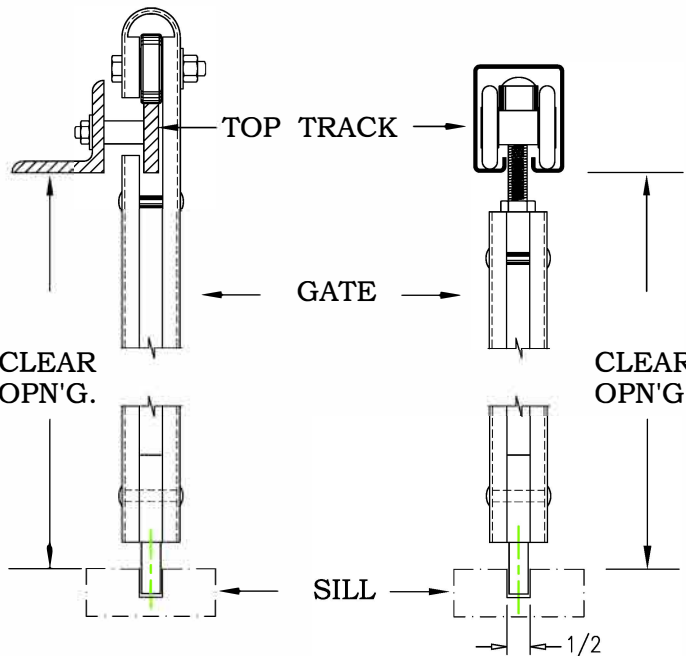
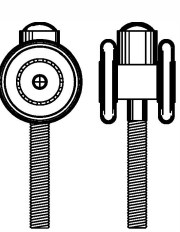


KNUCKLE TYPE

KNUCKLE TYPE



CHANNEL ROLLER



- GATE FINISH OPTIONS:
- BLACK PRIMER FLAT - ☐
 - STAINLESS STEEL 304 - ☐
 - STAINLESS STEEL 316 - ☐
 - POWER COATING - ☐
 - OTHERS - ☐

GATE OPENING HAND: LEFT HAND - ☐ RIGHT HAND - ☐

GATE TYPE: FREIGHT - ☐ PASSENGER - ☐

GATE SWITCH: YES ☐ NO ☐

GATE RESTRICTOR: YES ☐ NO ☐

GATE TOP TRACK: GATE GUIDE BAR with KNUCKLE TYPE - ☐ GATE CHANNEL with TOP ROLLER - ☐

GATE REQUIRED: _____ W x _____ H

ORDERING A GATE, PLEASE ADVISE IF A CAR HAS A TOP PANEL: YES ☐ NO ☐

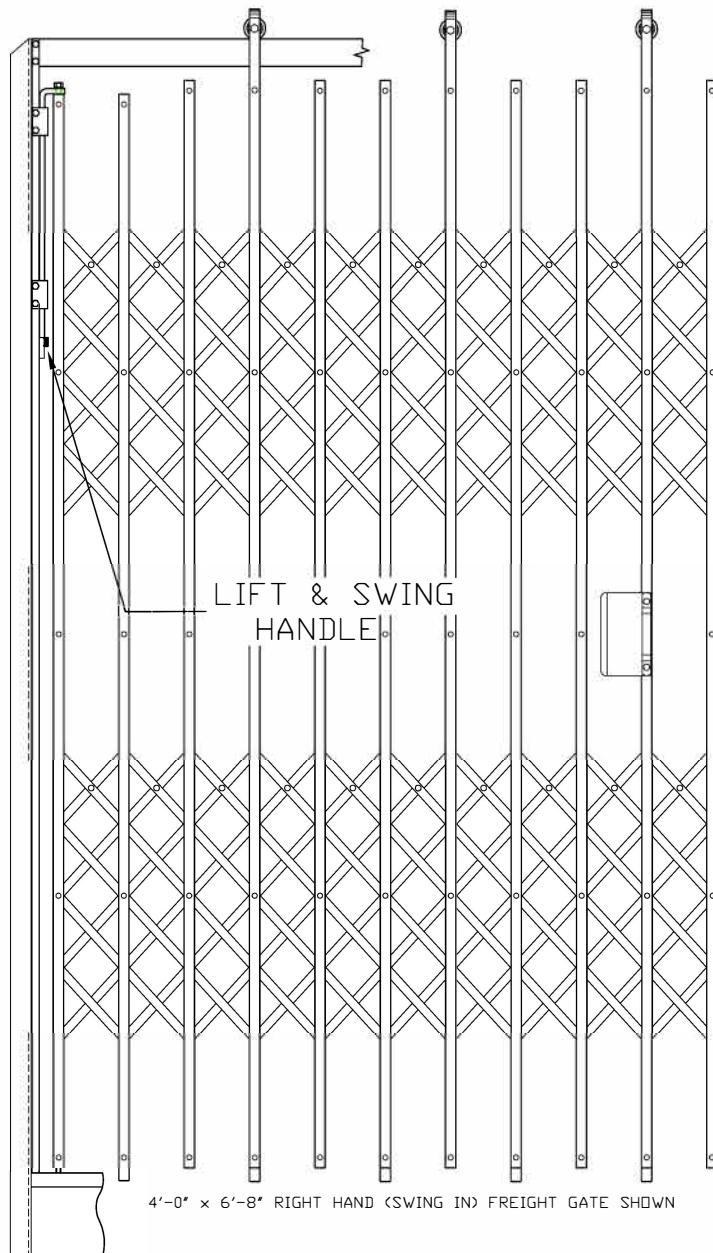
SWING-IN GATES AVAILABLE FOR MORE CLEAR OPENING.

THIS STURDY GATE IS CONSTRUCTED WITH DOUBLE 3/4" CHANNEL UPRIGHT (A36 STEEL), SPACED ACCORDING TO CODE REQUIREMENTS. WEBBING CONSTRUCTED OF 1/8"x5/8" CRS, ASSEMBLED WITH SEPARATING WASHERS AND SPECIAL FITTINGS TO PREVENT RUBBING.

GILLESPIE CORPORATION			
WARE, MASSACHUSETTS [413] 967-4980			
JOB NAME	_____		
WEIGHT	GILLESPIE ELEVATOR GATE		
MODEL	_____		
ENGINEER	YM	DATE	CHECK
DWG NO	_____		SHEET 1 OF 1



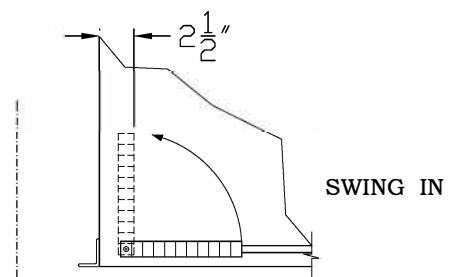
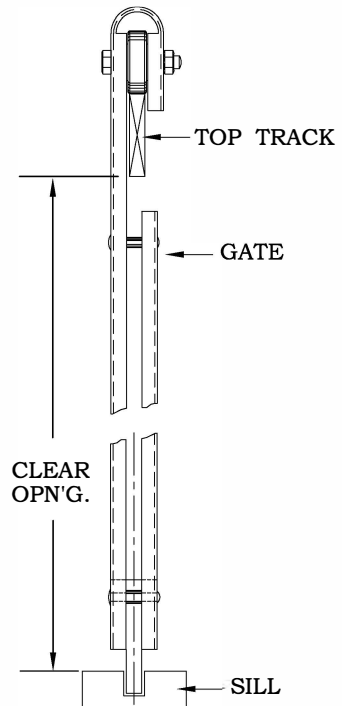
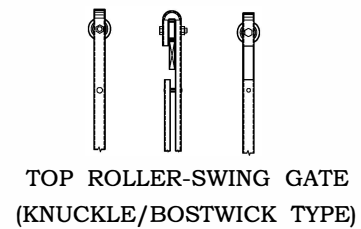
HORIZONTAL COLLAPSING FREIGHT ELEVATOR GATE (BOSTWICK SWING TYPE)



LEFT HAND GATE



RIGHT HAND GATE



THIS STURDY FREIGHT GATE IS CONSTRUCTED WITH DOUBLE 3/4" CHANNEL UPRIGHTS, SPACED ACCORDING TO CODE REQUIRMENTS.

WEBBING CONSTRUCTED OF 1/8" x 5/8" CRS, ASSEMBLED WITH SEPARATING WASHERS AND SPECIAL FITTINGS TO PREVENT RUBBING.

GATE FURNISHED IN FLAT BLACK PAINT AND STAINLESS STEEL. OTHER FINISHES UPON REQUEST.

FORMULAS:

CLEAR OPENING WITH GATE SWUNG=PLATFORM WIDTH MINUS 2 1/2".

TO CHOOSE GATE, PICK GATE 2" SMALLER THAN PLATFORM.

TAKE COLLAPSED WIDTH PLUS 1 1/2" AND DEDUCT FROM PLATFORM WIDTH TO GET NORMAL CLEAR OPENING.

Gillespie Corporation FOUNDED IN 1923

34 PINE STREET, P.O. BOX 359
TEL: 413-967-4980
WEBSITE: www.gillespiecorp.com

WARE, MA 01082-0359
FAX: 413-967-9534
E-MAIL: sales@gillespiecorp.com

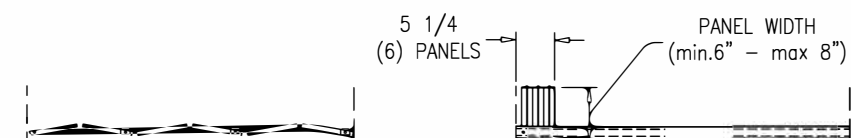
Collapsible Panel Type Car Gate

Some jurisdictions around the country no longer allow the use of collapsible car gates on elevators and lifts.

Below is some information on our collapsible panel car gates.

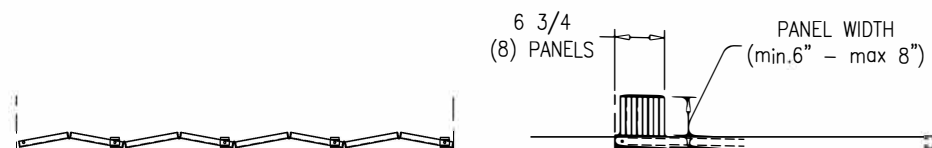
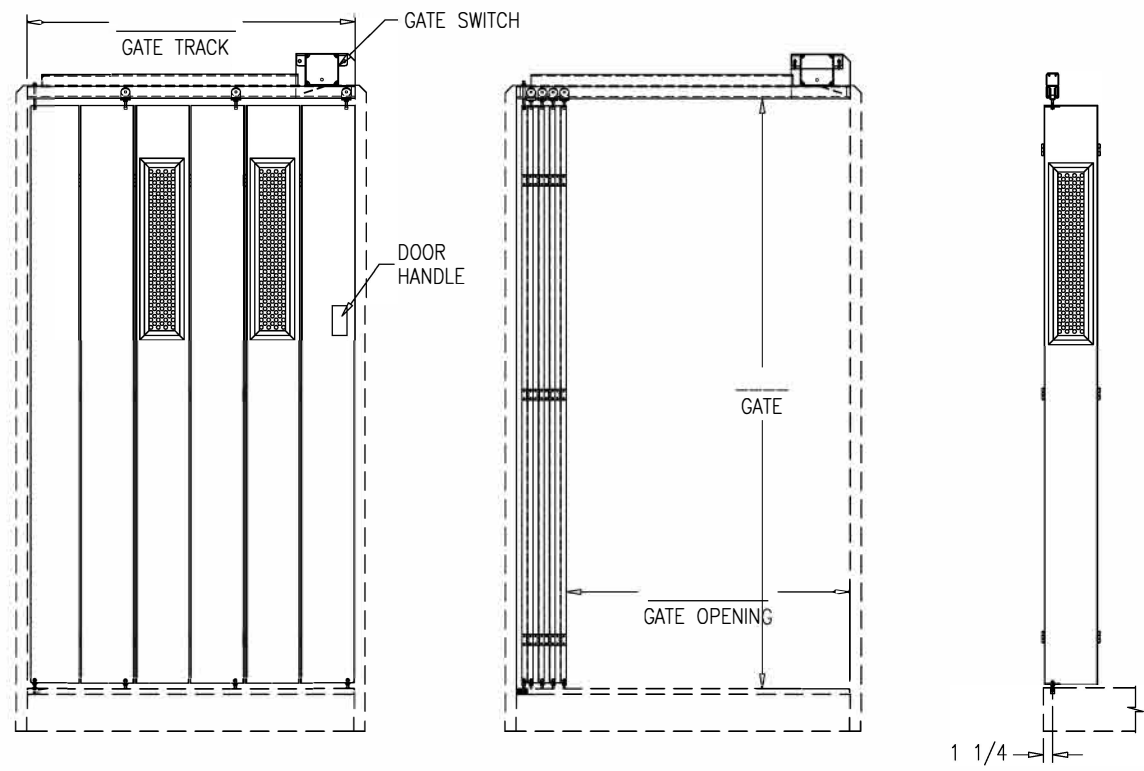
These gates can be painted or come fabricated in stainless steel

If you have question or need additional information, please contact us.



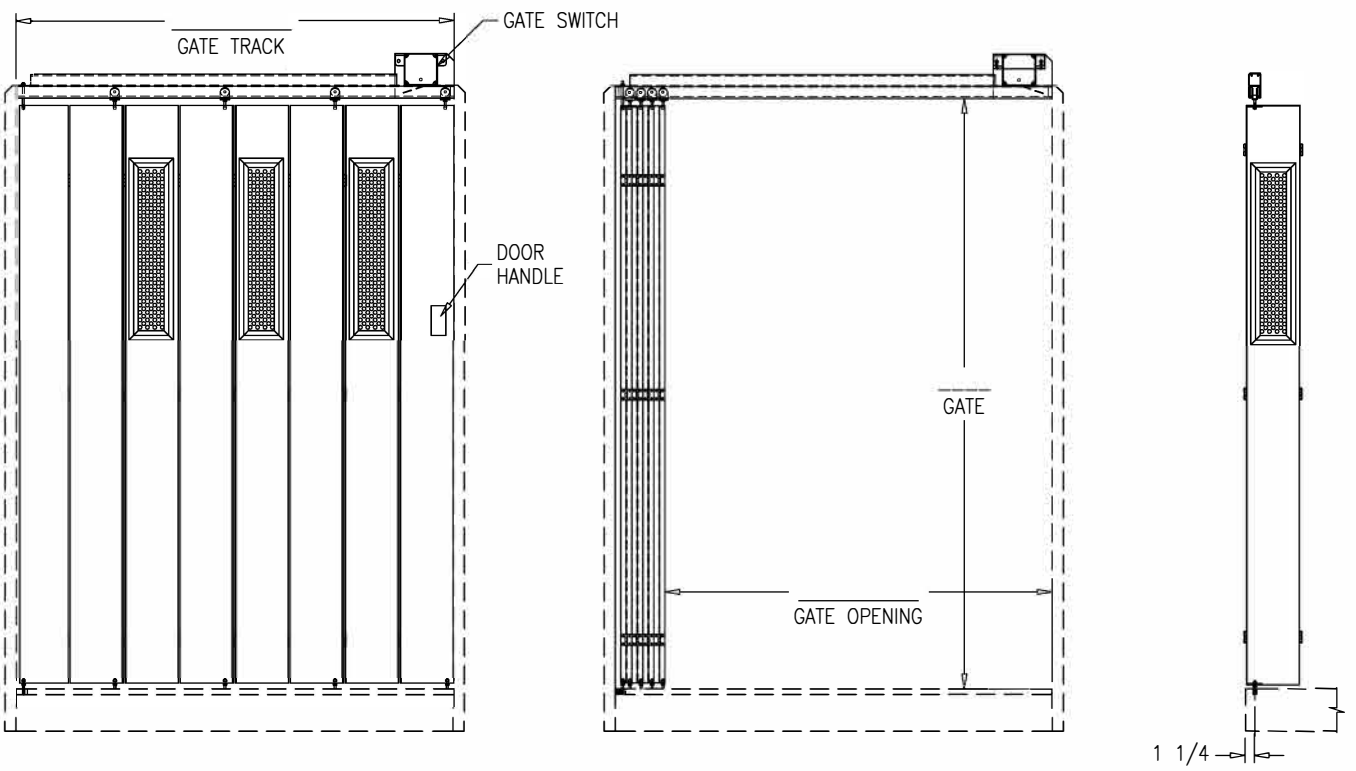
(6) PANEL GATE - UP TO 48" WIDE

RIGHT HAND GATE (from inside car)



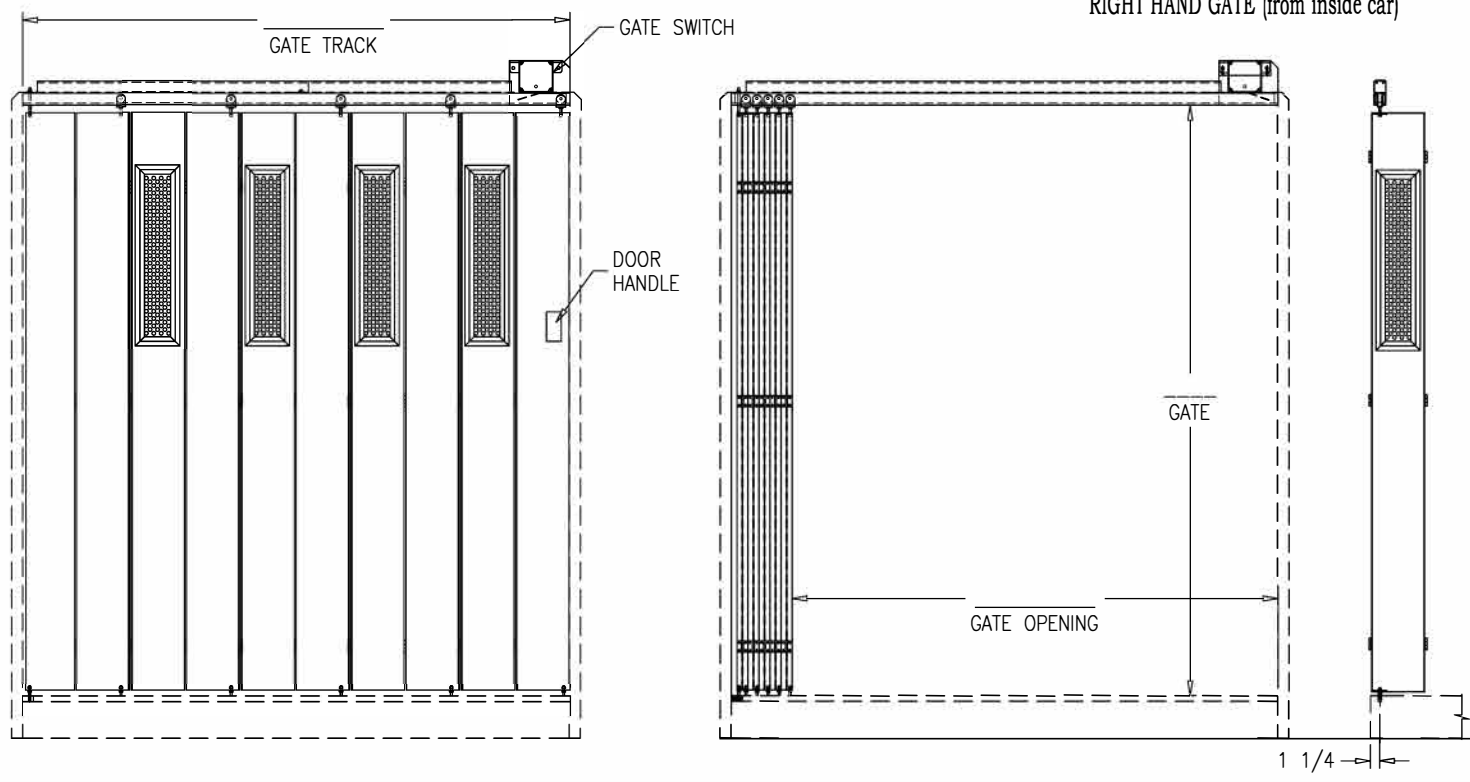
(8) PANEL GATE - UP TO 60" WIDE

RIGHT HAND GATE (from inside car)



(10) PANEL GATE - UP TO 75" WIDE

RIGHT HAND GATE (from inside car)



GATE OPENING HAND:
LEFT HAND - ☐
RIGHT HAND - ☐

PANEL GAGE:
16 ga - ☐
14 ga - ☐

GATE SWITCH: YES ☐ NO ☐
GATE RESTRICTOR: YES ☐ NO ☐

ORDERING A GATE, PLEASE ADVISE IF CAR HAS A TOP PANEL: YES ☐ NO ☐

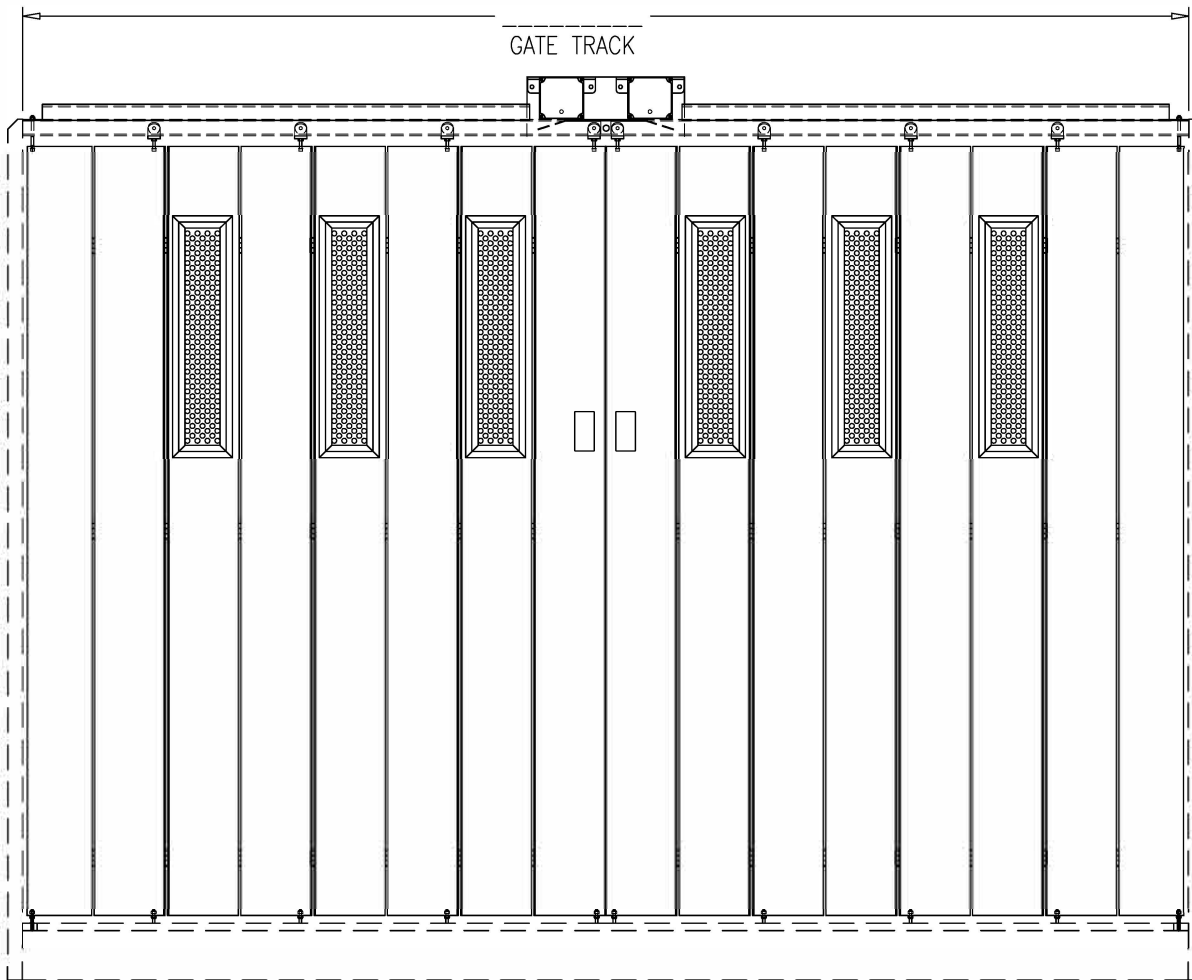
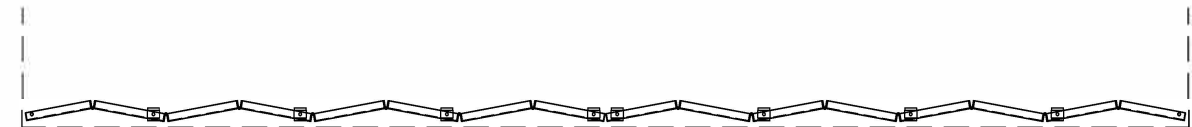
GATE FINISH OPTIONS:
BLACK PRIMER FLAT - ☐
STAINLESS STEEL 304 - ☐
STAINLESS STEEL 316 - ☐
POWER COATING - ☐
OTHERS - ☐

GATE REQUIRED: _____ W x _____ H

THIS STURDY GATE IS CONSTRUCTED OF STEEL PAN PANELS (UP TO 8" WIDE) WITH PERFORATED METAL VISION PANELS STAINLESS STEEL HINGES.

ASSEMBLED WITH SEPARATING WASHERS, NYLON BEARINGS AND SPECIAL FITTINGS TO ASSURE GATE SMOOTH OPERATION.

GILLESPIE CORPORATION		
WARE, MASSACHUSETTS [413] 967-4980		
JOB NAME	_____	
WEIGHT	GILLESPIE PANEL GATES	
MODEL		
ENGINEER	DATE	CHECK
DWG NO	SHEET 1 OF 2	

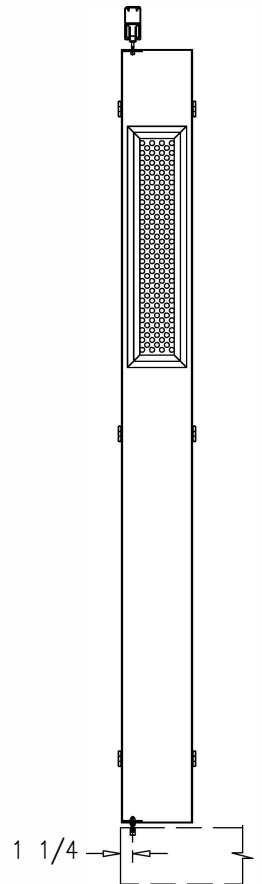
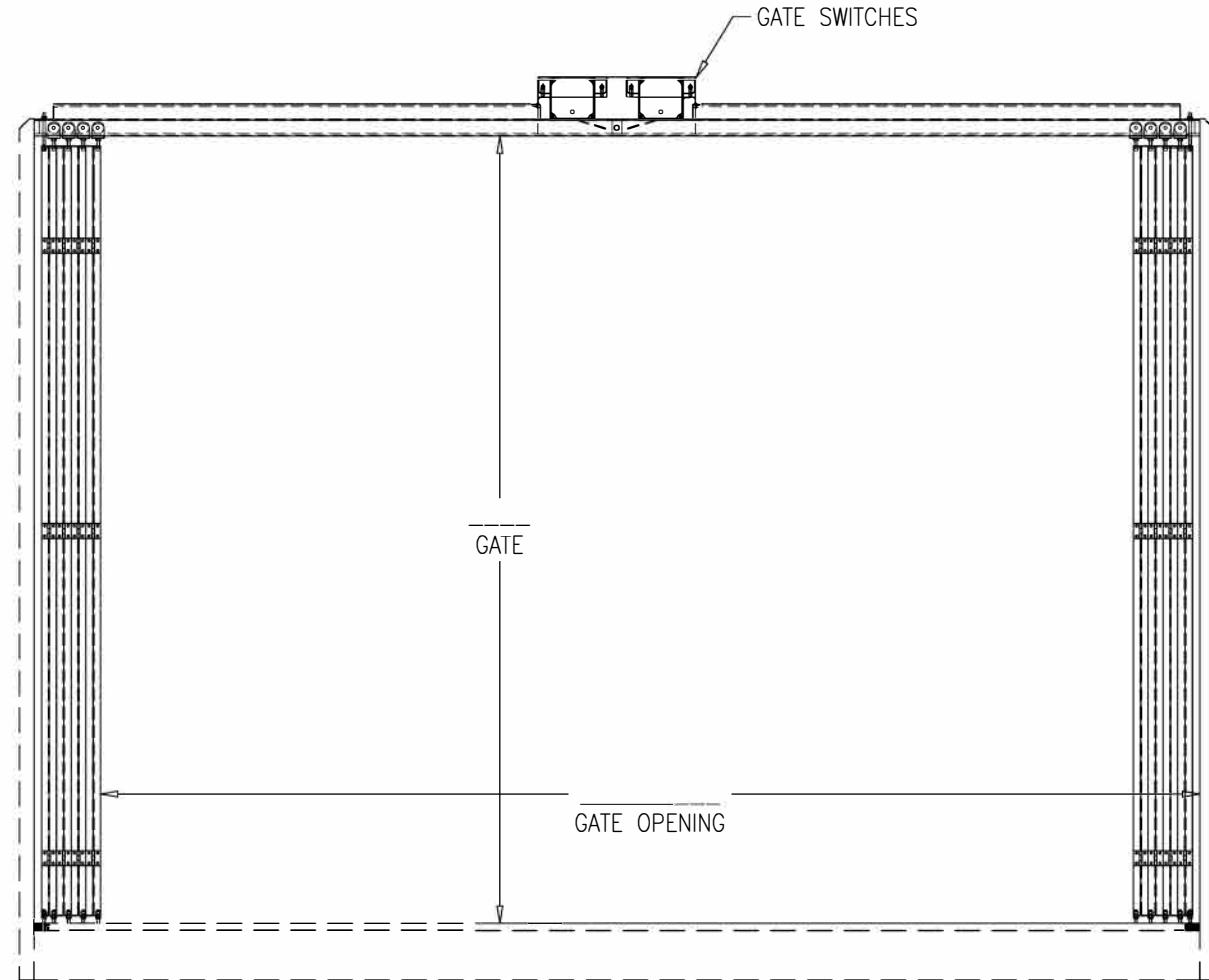


6 3/4
(8) PANELS

PANEL WIDTH
(min,6" - max 8")

6 3/4
(8) PANELS

DOUBLE (8) PANEL GATE - UP TO 12 FT WIDE



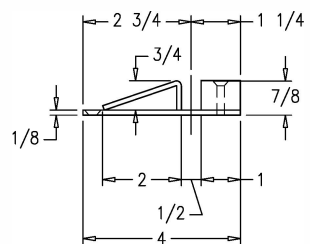
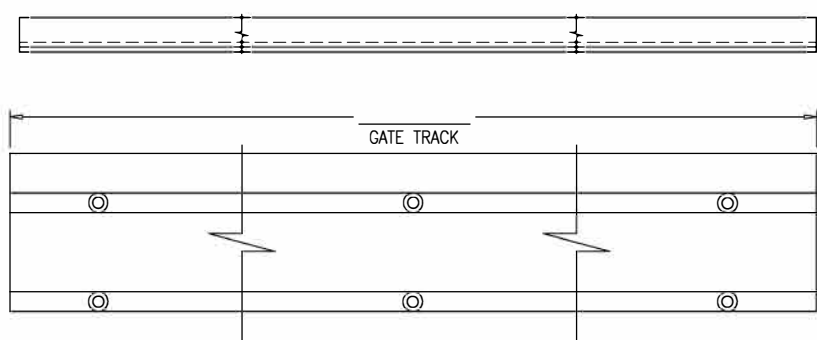
GATE REQUIRED: ____ W x ____ H

ORDERING A GATE, PLEASE ADVISE IF A CAR HAS A TOP PANEL: YES ☐ NO ☐

- GATE FINISH OPTIONS:
- BLACK PRIMER FLAT - ☐
 - STAINLESS STEEL 304 - ☐
 - STAINLESS STEEL 316 - ☐
 - POWER COATING - ☐
 - OTHERS - ☐

- PANEL GAGE:
- 16 ga - ☐
 - 14 ga - ☐

- GATE SWITCH: YES ☐ NO ☐
- GATE RESTRICTOR: YES ☐ NO ☐



ADD-ON PLATFORM SILL
AVAILABLE

THIS STURDY GATE IS CONSTRUCTED OF STEEL PAN PANELS (UP TO 8" WIDE) WITH PERFORATED METAL VISION PANELS. STAINLESS STEEL HINGES.

ASSEMBLED WITH SEPARATING WASHERS, NYLON BEARINGS AND SPECIAL FITTINGS TO ASSURE GATE SMOOTH OPERATION.

GILLESPIE CORPORATION		
WARE, MASSACHUSETTS [413] 967-4980		
JOB NAME	_____	
WEIGHT	GILLESPIE PANEL GATES	
MODEL	_____	
ENGINEER	DATE	CHECK
DWG NO	SHEET 2 OF 2	







896 015